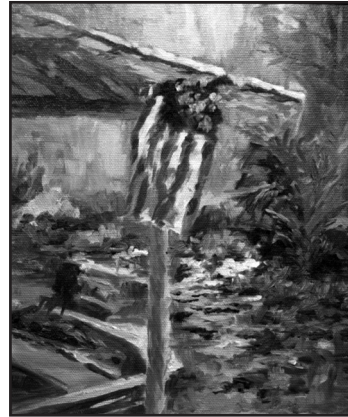


crealdé

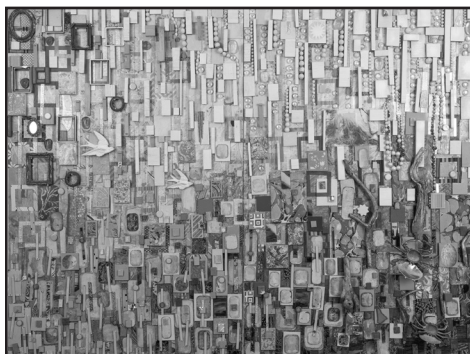
SCHOOL OF ART



2016

CREALDÉ SCHOOL OF ART ANNUAL REPORT, ISSUED JUNE 2, 2017

CELEBRATING
COMMUNITY ARTS
SINCE 1975



Program Schedule

Friday, June 2, 2017 Crealdé Annual Membership Meeting

7–8 pm

Welcome Address and Presentation

Toni Peck, President, Board of Directors

- *Presentation of 2016 Annual Report*
- *Introduction and election of new officers*
- *Video presentation*

2016 Recognition Awards

Outstanding Board of Directors Service Award

Presented by Peter Schreyer, CEO/Executive Director

Volunteer of the Year Award

Presented by Jan Hurt, Registrar & Membership Manager

Barbara Chandler, Manager, Hannibal Square Heritage Center

Faculty Member of the Year

Presented by Sherri Bunye, Education Manager

Juried Student Exhibition Awards

Painting & Drawing, presented by Barbara Tiffany,

Curator of Exhibitions and Painting & Drawing Manager

Sponsored by Art Systems of Florida

Ceramics, presented by Vincent Sansone,

Ceramics Studio and Program Manager

Sponsored by Florida Clay Art Co. and Crealdé School of Art

Sculpture, Fiber Arts, Jewelry & Glass, presented by David Lee Cumbie,

Sculpture Garden Curator and Sculpture Studio Manager

Sponsored by Sam Flax Orlando

Photography, presented by Sherri Bunye, Education Manager

Sponsored by Colonial Photo & Hobby

8–9:30 pm

Opening Reception 36th Annual Juried Student Exhibition

- Artworks on display in the Alice & William Jenkins Gallery
- Refreshments in the Showalter Hughes Community Gallery

Cover images: top, "Wekiva Old Glory," Kim Ashby, *Florida Painters Return to Crealdé*; middle, Tyler Durrant and Tylar Green in front of the historic Walker House on the West Side of New Smyrna Beach, *Storytellers 17*; bottom, "AbundanScape," Lillian Blades, *Spinning Yarn: Storytelling Through Southern Art*.

Executive Director's Progress Report

Dear Crealdé Members,

Please let me invite you to celebrate the completion of the 41st year in our organization's history, and thank you for your participation and support of Crealdé School of Art. Because of your dedication, along with area philanthropic foundations and government agencies, Crealdé is one of Florida's most vital arts organizations. Please let me invite you, along with my staff and Board of Directors, to celebrate our most recent achievements and reaffirm what our community-based nonprofit organization stands for:

- We feature a curriculum of over 125 visual arts courses and workshops in digital and traditional photography, painting, drawing, printmaking, ceramics, sculpture, jewelry, glass and fiber arts to students of backgrounds, taught by a professional faculty of over 50 artists.
- We host 10 annual visiting exhibitions in three galleries, four traveling exhibitions, a sculpture garden of 68 works and nine collaborative public art installations. We also have created an extensive permanent collection of 150 framed archival photographs and contemporary portraits with oral histories that celebrate Winter Park's historic African-American community and are on rotating display at Crealdé's Hannibal Square Heritage Center.
- We provide extensive ongoing community outreach programs and scholarships to economically disadvantaged individuals and underserved communities throughout Central Florida. This commitment expresses the ideal that the arts are for everyone, and that every individual and every community has a story worth telling.
- We offer unparalleled opportunities for emerging artists to be mentored by seasoned professional artists and to work in a studio environment.
- We honor the value of cultural preservation through innovative programming that uses the visual arts to inspire individuals and empower communities. In 2016, our Storytellers Teen Documentary Photography Program ventured to New Smyrna Beach in partnership with the Mary S. Harrell Black Heritage Museum.

Highlights of our recent achievements include:

- Crealdé's overall income from tuition, membership, fundraising and grants has experienced modest annual growth during the post-recession years.
- Additional offerings in new media and the teaching site in Winter Garden and expanded marketing have contributed to a tuition income growth of 3% in 2016 to \$559,335 (57% of total income) from paid enrollments of 4,809 students.
- In 2016, Crealdé began a two-year rebranding campaign, including logo redesign, new campus signage and a roll-out of a more user-friendly website scheduled to launch in the fall of 2017.

Executive Director's Progress Report

"I've been a volunteer member of the Crealdé School of Art Board of Directors since 2009 and it is a pleasure for me to now serve as Board President for this truly unique organization. I first experienced Crealdé in 1983 when I was 13 years old. I had a passion and natural talent for art and I wanted to learn more. Unfortunately, my mom was raising our family alone and could not afford to pay for an art class. My art teacher at school told her about Crealdé and encouraged us to apply for a scholarship. Crealdé responded, as it still does for so many people, by offering me a scholarship to a drawing class. I remember how excited I was and how the class completely transformed my artistic perception, abilities and self-confidence. As a package and branding designer today, I still use the techniques I learned in that class."

— Toni Peck, President,
Crealdé Board of Directors

- Crealdé's most substantial outreach effort, the Hannibal Square Heritage Center, received the first *Diversity & Inclusion Award* from the State of Florida, Division of Cultural Affairs.
- In 2016, Crealdé received its first National Endowment for the Arts Art Works Grant in traditional arts in support of *Spinning Yarn: Storytelling Through Southern Art*.

Crealdé is truly a place where everyone can feel welcomed, learn and progress at his or her own pace and level. It's also a place where dreams of creative expression really do become reality. I have personally witnessed the tremendous maturing of this visual arts organization, not only in the number of people we serve, but also in the way we have always embraced diversity in the communities we serve. This has clearly made our programs more meaningful to more people, which has elevated Crealdé's standing locally and regionally.

Thank you again for your ongoing support of Crealdé School of Art and for believing that the arts make a difference to the quality of our communities, families and individual lives. Our founder, Bill Jenkins, would be proud to see us all pull together to sustain the mission of the organization he launched in 1975. Deeply committed to the ideal that the arts are for everyone, we are confident that Crealdé in the future will not only sustain, but excel its wide range of contributions to life in Central Florida!

With kind regards,



Peter Schreyer, CEO/Executive Director

School History

“Crealdé has been my home away from home since my husband passed away in the year 2000. I enjoy taking classes, attending events, exhibitions and volunteering.”

— Willy Maria Lopez,
Artist, Special Volunteer and
Member since 2012

Crealdé Arts Inc. was founded in 1975 by William Jenkins to promote local artists by providing studio and gallery space. With profits earned from sales and rentals, Jenkins established ArtReach to provide art experiences to seniors and disabled individuals. By 1978, Crealdé evolved into a teaching center and became a 501(c)(3) organization. In the 1980s, three artistic departments were established, and the curriculum was expanded. A fine arts gallery was established in 1980, and in 1996 the gallery was named after Crealdé’s founder and his wife.

Throughout the 1990s, Crealdé expanded on its mission, established a scholarship fund, launched the new Emerging Artist Program and deepened its commitment to make the arts available to the widest segment of the population.

By the late 1990s, Crealdé had established three permanent outreach sites to conduct free classes for children, teens and seniors in underserved communities. In addition, more than 20 collaborative public-art projects – murals, sculptures and photo-documentaries – have been conducted through partnerships with other nonprofit organizations including Boys & Girls Clubs of Central Florida and the Farmworker Association of Florida, and funded by many private foundations.

Crealdé’s free galleries host artists from throughout the United States and the world to exhibit, present lectures and conduct workshops for the community. In 1999-2000, Crealdé undertook an aggressive capital campaign to construct its first building addition in more than 20 years. Nearly \$200,000 was raised including a matching Cultural Facilities Grant from the State of Florida. The 3,000-square-foot expansion features a second painting studio, the Showalter Hughes Community Gallery and lecture space, and a covered porch overlooking beautiful Lake Sterling.

In keeping with Crealdé’s mission to provide outreach, foster cultural diversity and preservation of our cultural heritage, Crealdé deepened its long-standing relationship with the City of Winter Park in 2007 by opening the Hannibal Square Heritage Center, which stands as a tribute to the past, present and future contributions of Winter Park’s African-

American community. The facility serves as a home for *The Heritage Collection: Photographs and Oral Histories of West Winter Park*. In partnership with academic institutions and other nonprofit organizations, the center also presents exhibitions and programs that focus on local history, cultural preservation,



Photograph of Crealdé main campus entrance by Sherri Bunye

School History

“The classes at Crealdé are educational and professional. I get individual attention that you cannot get in a college classroom. I have learned more at Crealdé than in a college setting because the instructors are also professional artists.”

— Deborah Umphreys, Artist, Painting & Drawing Fellowship Program and Special Volunteer

African-American experience and Southern folklore. The center has two classroom spaces and a digital classroom, which expanded Crealdé's capacity to serve its students. With the addition of this new venue, Crealdé's budget reached the million dollar mark for the first time.

Out of the desire to increase its participation in the economic vitality of the community, Crealdé secured its first Tourism Development grant from Orange County Government in 2007, which has continued, together with the City of Winter Park Redevelopment Agency, to be one of Crealdé's largest funders.

In 2010, Crealdé completed its second campus renovation, totaling \$220,000, funded this time by an Orange County Cultural Facilities Grant and matched by contributions from an enthusiastic Crealdé membership. The renovation included the reroofing of three studio buildings, installation of “green” air-conditioning units for the galleries and office, painting and wall repair of the entire facility and restoration of brick walkways. The creation of a new front campus entrance, complete with landscaping and a distinctive mosaic mural, leads into the Contemporary Sculpture Garden, which has been updated with an educational walking tour and a beautiful mosaic mural dedicated during Crealdé's 35th anniversary in the spring of 2010. In the same year, Crealdé



Decorated with festive luminarias, the Heritage Center welcomes visitors to one of its many free community events. Photograph by Rick Lang

also entered a new government partnership with the City of Winter Garden, enabling us to offer a limited number of tuition-driven classes at the new Jessie Brock Community Center, strategically located near several growing west Orange County and Lake County communities.

Crealdé celebrated its 40th anniversary in 2015 with a series of exhibitions that focused on the artistic success of our alumni and also highlighted national artists whose work celebrates America's cultural diversity.

A core part of this organization's belief and mission is that the arts are for everyone, and that every individual has a story worth telling and something creative to contribute, making a positive impact on their peers, family and the community. Crealdé School of Art remains committed to offering stimulating, educational, hands-on arts experiences and gallery exhibitions to Central Florida's diverse population.

Mission Statements

Mission Statement for Crealdé School of Art

Crealdé's mission is to stimulate the creative process inherent in each individual through hands-on education in the visual arts and to cultivate a lifelong aesthetic appreciation. This mission is realized through comprehensive studio art instruction and interaction with professional working artists; presentation of gallery exhibitions and lectures; related art activities that stimulate art exploration and specialization including an extensive outreach program that services at-risk minority youth, individuals with disabilities and seniors; and fostering cultural diversity and understanding of pluralism and preservation of our cultural heritage.



Painting of Crealdé campus and tower by M.J. Gandee

Mission Statement for Galleries and the Contemporary Sculpture Garden

The primary focus of the galleries is to present thought-provoking, quality exhibitions and programs. Installations reflect a variety of media and represent the work of local, regional and national artists. As an extension of the community-based school of art, the Alice & William Jenkins Gallery, Showalter Hughes Community Gallery and the Contemporary Sculpture Garden are committed to providing educational experiences to students, members and Central Florida's diverse population.

Mission Statement for the Hannibal Square Heritage Center

In partnership with the community and the City of Winter Park, Crealdé School of Art will operate the Hannibal Square Heritage Center as a tribute to the past, present and future contributions of Winter Park's African-American community. Through innovative programming in the arts and humanities, the Heritage Center will become a neighborhood focal point, archive and home to *The Heritage Collection: Photographs and Oral Histories of West Winter Park*. Through exhibitions and diverse educational programs, the center inspires all Central Floridians and visitors to our area to respect, explore, participate and become more aware of their own community's history and heritage.

Organization

Roster

as of 6/1/17

BOARD OF DIRECTORS

Officers

Toni Peck,
President
Dean Jennings,
Vice President
Frank Schornagle III,
Treasurer
Kevin Cosgrove,
Secretary
Cecelia Bonifay,
President Emeritus
Ali Bovis
Valada Flewellyn
Percy Maynard
Christina McKelvey
Dan Iosue
Shirley Range
David Storm
Mark Thompson

Committee Chairs

Frank Schornagle III,
Finance Committee
Peter Schreyer,
Program & Marketing Committee
Membership & Donor Relations Committee
Toni Peck,
Audit Committee
Dan Iosue,
Auction Committee
Dean Jennings,
Facilities Committee

ADMINISTRATION

Peter Schreyer,
CEO/Executive Director
Jan Hurt,
Registrar & Membership Manager
Nicole Fournier,
Accounting Manager
Betsy Schreyer,
Grants & Donor Relations Manager
Sherri Bunye,
Education Manager
Belinda Glennon,
Young Artist Program Manager
Barbara Tiffany,
*Curator of Exhibitions and
Painting & Drawing Manager*
David Cumbie,
*Sculpture Garden Curator and
Sculpture Studio Manager*
Vince Sansone,
Ceramics Studio and Program Manager
Carlo Jannotti and John Baker,
Facilities

HANNIBAL SQUARE HERITAGE CENTER STAFF

Barbara Chandler,
Heritage Center Manager
Fairolyn Livingston,
Heritage Center Chief Historian
Mary Daniels,
Heritage Center Historian & Docent

SENIOR FACULTY

Barbara Bailey
Stacy Barter
Donne Bitner
Doug Bringle
David Lee Cumbie
Belinda Glennon
Milton Heiberg
Jon Manchester
Marie Orban
Tom Sadler
Vincent Sansone
Dennis Schmalstig
Peter Schreyer
Don Sondag
Barbara Tiffany

ASSOCIATE FACULTY

Stefan Alexandres
Sherri Bunye
Patricia Byron
Marsha De Broske
Ken Foster
Catherine Hempel
David Hunter
Vadim Malkin
Hye Shin
Michael van Gelder

ADJUNCT & OUTREACH INSTRUCTORS

Anita Cohen
Trish O'Donnell Cortes
Paula Davis
Prayong Deeying
Fabiola Hansen
Robert Lennox

GUEST INSTRUCTORS

Beatrice Athanas
John Baker
Marc Barrett
Lilly Carrasquillo
Noreen Coup
Sherry Goode-Carmell
Laurie Hagemaiier
Brandon Price
Robert Ross
Gary Rupp
Patti Shistle
Geoffry Sprague
Wendi Swanson
Luis Torruellas
Deborah Umphrey
Patrick Van Dusen

Program Curriculum

To carry out its mission that the arts are for everyone, Crealdé School of Art provides an extraordinary array of dependable services to an ever-broadening community. These services are based on three core program components: Educational Curriculum, the Galleries and Lecture Series and our award-winning Outreach Programs.

Crealdé's Art Education Tuition-based Curriculum consists of more than 200 different classes and workshops for adults and children that are offered in the following formats:

- Five seasonal sessions for adults and five 6-week sessions for children.
- A total of over 40 workshops led by Crealdé's talented faculty, including landscape painting and drawing, sculptural welding, adult-child team ceramics projects, jewelry making and wedding photography.
- A series of Visiting Artist workshops are held in conjunction with current exhibitions.

Through its diverse programming, Crealdé interprets its mission to make visual arts an integral part of community life in Central Florida. This is made possible by offering hands-on art education, exposure to quality exhibitions and lectures, and the opportunity to work in studios staffed by professional artists. Every year thousands of individuals of all ages and backgrounds participate in Crealdé studio classes and related programs. The following synopses provide an overview to each medium's educational programming.

Painting and Drawing

Crealdé's largest program employs more than 15 arts educators and offers a comprehensive curriculum of more than 30 classes, including oil, acrylic, printmaking, collage, mixed media, watercolor, abstract, portrait, figure and plein-air painting. In addition to introductory and intermediate courses, Crealdé also offers classes for advanced art students, such as life drawing, abstract painting and portrait painting. Figure drawing workshops are held every Friday and Sunday. These two open-studio sessions are offered throughout the year. National and international artists have taught workshops on special topics such as advanced oil painting techniques, still-life painting and looser abstract painting methods.

Photography

Crealdé's Photography Program provides over 20 classes designed for amateurs and advanced students. The curriculum offers a variety of classes and workshops for film and digital students interested in developing basic photography skills to pursue fine art and commercial photography careers. Conventional film photographers enjoy expanded access to one of the area's only remaining school-based darkrooms. Two classrooms dedicated to digital photography include nine computer stations. Crealdé's Digital Print Lab and Finishing Area give digital students the ability to take their images from pixels to print.

Program Curriculum

"I enrolled my boyfriend and myself in the 'Heads Up' workshop with Vince Sansone as a gift. We are both artists but do not usually work with clay. The workshop was a wonderful way to play with a new medium, while also connecting as a couple. Vince is so easygoing and free with his knowledge. We truly enjoyed expanding our creativity in the friendly space."

— Molly MacCartney,
New student

Ceramics and Sculpture

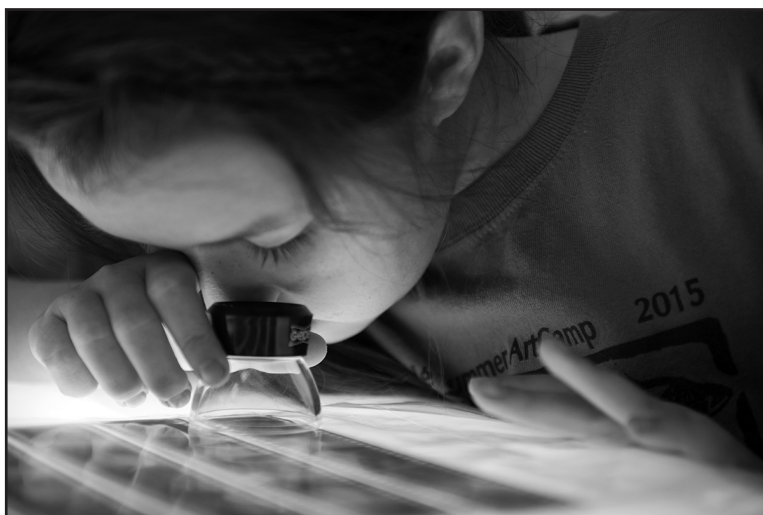
Our 3-D curriculum features instruction in various media and subjects, such as figurative and abstract sculpture, bronze casting, coppersmithing, and functional ceramics including wheel throwing and handbuilding. The facility includes gas, raku and electric kilns, as well as a professional bronze foundry in a separate building. The program has a liberal open studio policy, enabling students to work independently. Visiting Artist Workshops have included special topics such as life casting. A series of weekend workshops include welding, hand building and stone carving. Collaborative projects have produced pieces on permanent display in Crealdé's Contemporary Sculpture Garden.

Fiber Arts, Jewelry and Glass

At the end of 2015, Crealdé launched an expanded Fiber Arts program in response to national trends and increased interest in this medium in Central Florida. Introductory Fiber Arts programs include classes in bookmaking, papermaking and papier mâché. Crealdé offers classes in traditional and contemporary quilting methods including patchwork, appliqué, longarm workshops and fabric collage at the Hannibal Square Heritage Center. Last year, Crealdé added a spray booth for children and adults taking papermaking classes and workshops. Jewelry offerings include repoussé techniques, metal folding and forging, and cold connections and riveting, as well as a popular four-week Introduction to Jewelry Design and Fabrication. Crealdé's Glass program includes faculty-offered classes in stained glass as well as guest artist workshops in glassblowing and glassworking.

Young Artist Program

The Young Artist program represents roughly 20 percent of Crealdé's total enrollment. This program serves children and teens ages 4 to 17 in more than 20 classes on three campuses in a variety of media. Established as the first of its kind in 1982, Crealdé's Summer ArtCamp provides 350 children the opportunity to participate in one- or two-week sessions



Summer ArtCamp opens the door for hundreds of children and teens to explore hands-on art-making in various disciplines

of hands-on art instruction in six mediums. The summer concludes with the *Summer ArtCamp Exhibition*, featuring artworks from individual campers and large-scale collaborative works mentored by the camp instructors. The art is on display for two weeks in the Showalter Hughes Community Gallery on Crealdé's main campus.

Hannibal Square Heritage Center

“The Hannibal Square Heritage Center is the permanent home to The Heritage Collection: Photographs and Oral Histories of West Winter Park that Crealdé created with community support. Crealdé is a valuable asset and has committed to the City of Winter Park by providing quality programs to our community for four decades.”

— Dori Stone, AICP
Planning and Community
Development Director,
City of Winter Park

In partnership with the community and the City of Winter Park, Crealdé School of Art operates the Hannibal Square Heritage Center as a tribute to the past, present and future contributions of Winter Park’s African-American community. Through innovative programming in the arts and humanities, the Heritage Center is a neighborhood focal point, archive and home to *The Heritage Collection: Photographs and Oral Histories of West Winter Park*. Through visiting exhibitions, community-based public art exhibitions and diverse educational programs, the center inspires all Central Floridians and visitors to our area to respect, explore, participate and become more aware of their own community’s history and heritage. The Heritage Center hosts regular tuition-based classes, including digital photography coursework, but primarily exists as a service to the greater community and an outreach center for youth and senior classes as listed above and for other community arts-based services as follows:

The Heritage Collection: Photographs and Oral Histories of West Winter Park

Crealdé’s most extensive outreach project is an on-going community-based project celebrating the heritage, character and contributions made by Winter Park’s African-American community. During annual Community Heritage Days, the Crealdé team of historians, cultural anthropologists and documentary photographers collaborate with intergenerational members of the historic Hannibal Square neighborhood to collect historically illustrative personal photographs and corresponding oral histories to tell the story of the community. This project is modeled after similar efforts conducted by the Los Angeles County Library and represents the first collection of its kind implemented in a Central Florida community.

Completed phases from this on-going project have been dedicated annually during the City of Winter Park’s Martin Luther King Day Unity Heritage Festival. Originally on display at the Winter Park Community Center, the *Heritage Collection* became the cornerstone and impetus for building the new Hannibal Square Heritage Center.

In 2012, *The Sage Project: Hannibal Square Elders Tell Their Stories* was added to the permanent collection of the center. The 18 contemporary portraits and oral histories captured the recollection of a special group of residents, ages 85 to 106, and represented Crealdé’s tribute to the City of Winter Park’s 125th anniversary. In 2016 the Florida Historical Society published a book on the *Heritage Collection*, highlighting some of its most popular images and oral histories.

“What Heritage Means to Me” Field Trip Program

This program, with curriculum for teachers designed by Heritage Center staff, offers groups of approximately 25 fourth to eighth graders an interactive tour and discussion of the *Heritage Collection* and the Visiting Exhibition led by a community historian, followed by a visual art workshop where students create a piece of folk art incorporating their personal experience of tradition, heritage, family, community and country.

Hannibal Square Heritage Center

“A great opportunity to bring the rich history of the West Side of Winter Park into the hearts and minds of people worldwide. Generations to come will see the actual makings of this proud community.”

— Carol A. Anderson,
Lifelong resident,
West Side of Winter Park

Hannibal Square Community Workshops with Visiting Artists

Select artists exhibiting in the Heritage Center Visiting Exhibition Series provide free community workshops. Past artists include the Smithsonian-collected Ruby C. Williams and Mr. Imagination, Missionary Mary Proctor, sacred arts folk artist Linda Schäpper, Gee’s Bend quiltmakers Louisiana Bendolph and her mother, Rita Mae Pettway, and sweetgrass basketmaking workshops with Barbara McCormick and LaQuetta Smith. In addition to creating personal works of art relating to family and heritage, participants collaborate with the visiting artist to create a public art piece for the Heritage Center’s permanent collection. Every spring, the Heritage Center hosts the Hannibal Square Heritage Center Folk & Urban Art Festival, a daylong celebration of our community’s diversity with roots music, folk and traditional arts, featuring Florida artists including some of the original and new generations of Florida Highwayman, a free children’s workshop titled “KidFolk,” and booths representing the center’s many supportive community and business partners.



An award from the National Endowment for the Arts helped to fund sweetgrass basketmaking workshops with artists Barbara McCormick and LaQuetta Smith from South Carolina. Centuries-old traditions were shared with eager learners at the programs offered in conjunction with the “Spinning Yarn: Storytelling Through Southern Art” exhibition on display at Crealdé’s main campus gallery and the Hannibal Square Heritage Center.

Galleries & Lecture Series

Crealdé serves its mission to make the arts inspiring, engaging and accessible by providing the community with free exhibitions featuring visiting and local artists who often provide educational lectures and workshops together with their exhibitions.

The Alice & William Jenkins Gallery

Formally opened in 1980, the Alice & William Jenkins Gallery mission is to exhibit the work of noted and established Florida artists, as well as to introduce national and international artists to Central Florida. Each of the four to six annual exhibitions are professionally curated by a member of the Crealdé Gallery Committee or a guest curator. Crealdé produced a year of quality exhibitions in 2016 including four diverse exhibitions shared by the Alice & William Jenkins



Photographer Tom Rankin, Duke University, displayed a selection of his documentary work of sacred spaces taken over two decades at the main campus and Hannibal Square Heritage Center.

Gallery and the Hannibal Square Heritage Center: *The Right of Passage – A Collection of Work by Grady Kimsey from the 1940s to the Present* and *Progressions: Work by Former Students*, from February to April; *Tom Rankin: Sacred Landscapes of the South*, from April through June; *35th Annual Juried Student Exhibition*, in July and August; and *Sprinning Yarn: Storytelling Through Southern Art*, from September through December.

Showalter Hughes Community Gallery

Established in 2000, the Showalter Hughes Community Gallery highlights four to five exhibitions annually, featuring work by students, faculty and emerging artists and outreach programs. The gallery features shelves where Ceramic Fellows and faculty show and sell their work, and also serves as a classroom and facility for member and community events with seating for 80. Some of the 2016 exhibitions included *The Florida Painters Return to Crealdé*, *34rd Summer ArtCamp Student Exhibition* and *The Art of Fellowship in Ceramics and Photography*.

The Contemporary Sculpture Garden

Established in 1997, the lakeside Contemporary Sculpture Garden is located on the grounds at Crealdé School of Art's main campus and is open to the public. A self-guided tour leads visitors through the attractively landscaped Crealdé campus and approximately 60 three-dimensional pieces of outdoor art and educational panels. The sculptures are used to teach field trip children about the diversity of expressive styles and durable media available to the sculptor. The collection is curated by sculptor David Cumbie, the Sculpture Studio Manager.

Galleries & Lecture Series

"I really love Crealdé's commitment to community outreach projects – specifically the Storytellers teen photo exhibitions. I enjoy taking classes at the Hannibal Square Heritage Center and learning about the history of the West Side of Winter Park neighborhood."
— Student

Hannibal Square Heritage Center

Established in 2007, the galleries at the Hannibal Square Heritage Center campus host three to four annual exhibitions that explore local history, cultural preservation, the African-American experience and Southern folklore, through educational and visual arts mediums including documentary photography, painting and textiles. Exhibitions in 2015 included

The Right of Passage – A Collection of Work by Grady Kimsey from the 1940s to the Present together with *Progressions: Work by Former Students*, from February to April;

Tom Rankin: Sacred Landscapes of the South,

from April through

June; *Heritage Collection Phase VIII: The Collins Family*, from July to September; and *Spinning Yarn: Storytelling Through Southern Art*, from September through December.

The permanent collection at Hannibal Square Heritage Center is titled *The Heritage Collection: Photographs and Oral Histories of West Winter Park* which is always on display as well as the *Hannibal Square Timeline* juxtaposing significant local and national historic events impacting African Americans. The center also hosts a collection of community-created artworks that are the result of collaborations with noted folk artists Mr. Imagination, Ruby C. Williams, Missionary Mary Proctor and quiltmaker Lauren Austin, among others.

Traveling Exhibitions

Exhibitions created as a result of Crealdé's award-winning outreach and gallery programs become part of our archives and are available to travel to other venues for display. Two new traveling documentary photography projects debuted in 2015. After opening at the Hannibal Square Heritage Center, *St. Augustine at 450*, an exhibition celebrating the oldest city in the United States on the occasion of its anniversary year, was exhibited in St. Augustine at the Rotunda Gallery in the St. Johns County Administration Building and then traveled to the Art in Public Places Gallery at Winter Garden City Hall.

A collaboration with the Orange County Regional History Center, the exhibition *100 Years of Hannibal Square* opened at the downtown venue, featuring photographs from the Hannibal Square Heritage Center permanent collection.



Paintings, ceramics and mixed media works by longtime Central Florida artist and educator Grady Kimsey filled three galleries in early 2016

Outreach and Scholarships

"It was so heartwarming to see our members showing off their art work to their families and seeing their family members take pictures and ooh and ahh over the pieces. It was the kind of day that reminds me why I have been involved with Easter Seals for so many years. I can see the difference we are making in their lives. We have Crealdé to thank for such a wonderful day – and a wonderful year of art programming for that matter! Our Arts and Wellness program was developed to help stimulate the minds and senses of our members, especially our members with dementia and Alzheimer's, and Crealdé fits perfectly into that mission."

Cory L. Taylor, Chairperson, Easter Seals Central Florida Advisory Board Vice Chairperson, Easter Seals State Fiduciary Board

Since 1995, Crealdé has taken the opportunity to use the visual arts as a means of connecting communities, fostering cultural awareness and promoting understanding. As part of its mission, Crealdé's outreach programming sustains an unwavering commitment to serve every community we enter. Our outreach and scholarship programs emphasize working with underprivileged children, at-risk teens and low-income senior citizens. Each class or project introduces the student to the specific art medium, then, through a public exhibition or installation, shares the participants' achievements with the community. Crealdé outreach programming includes the following:

Storytellers Teen Documentary Photography Program

Ten-week classes use photography to give students ages 13 to 17 an opportunity to express themselves in pictures and words, while exploring their cultural heritage, neighborhoods, families and friends. Since 1996, Storytellers has been funded by six different private foundations, resulting in 17 completed projects and exhibitions at community sites. The finished projects become part of Crealdé's Archive of Community-Based Documentary Photography, and individual exhibitions are frequently loaned for display at the facilities of our community partners. The most recent Storytellers program engaged students from the historic West Side New Smyrna Beach community, representing a partnership with the Mary S. Harrell Black Heritage Museum.

Neighborhood Pride Public Murals

Since 2000, Crealdé has produced seven privately funded murals throughout Central Florida. During these eight-week classes, young students ages 10 to 14 collaborate to create a public mural in their own community, helping to beautify as well as increase awareness of important themes such as non-violence, education, family and cultural heritage. In addition to the young painters developing their own styles and individual modes of expression, the program helps bring segments of the community together for a hands-on, shared experience.

Monument Builders

Since 2001, young sculpture students have collaborated with their instructors to construct a permanent outdoor piece of art in neighborhoods throughout Central Florida. Themes include cultural heritage, non-violence and drug-free living. A 12-foot-long, 4-foot-high Memory Wall created in 2008 with Mr. Imagination, a Pennsylvania-based African-American folk artist, is permanently installed at the Hannibal Square Heritage Center. The Memory Wall, holding objects donated by community residents, is Winter Park's first collaborative public art sculpture.

Art Samplers for Children

Eight-week classes provide groups of students ages 5 to 10 with hands-on instruction in the fundamentals of art-making. Self-expression and self-esteem are fostered in the following underserved communities where Crealdé Outreach Programs are offered: The John H. Bridges Community Center in Apopka, the Maxey Community Center in Winter Garden and the Hannibal Square Heritage Center in Winter Park. An end-of-the-year party and exhibit allow these youth to display and celebrate their artworks.

Outreach and Scholarships

“Throughout the many years of our wonderful relationship with you, our students and the entire community have benefitted from the art projects. Just today, we showed off our students’ photography and mural projects to our visitors at Hope CommUnity Center. Many of our students still tell of their positive experience in the Storytellers projects we have done over the years as a result of our partnership with Crealdé. We are always excited and honored to be a part of anything you invite us to do as participants. We know the experience will educate our youth and elevate their sense of self and their often unheard voices and unseen talent.”

— Mary L. Carroll,
Board of Directors
Hope CommUnity Center,
Apopka

Art Programs for Seniors

Senior Art Sampler is a 16-year program offered in partnership with the City of Winter Park and provides free art classes to West Side of Winter Park seniors ages 60 and older. Led by Fabiola Hansen, participants learn techniques in painting and drawing to produce artwork on canvas, paper and unconventional materials.



Artist/instructor Fabiola Hansen inspires her senior students at the Hannibal Square Heritage Center.

Many of the participants

have been in the program for years, committed to the process of learning art.

In summer 2015, Crealdé began offering the Hands-On Inspiration Fine Art Sampler at Easter Seals of Florida’s Day Break Program in Winter Park. Day Break serves adults with a decrease in physical, mental or social abilities and some physical limitations including Alzheimer’s disease, developmental disabilities, emotional problems and behavioral problems; and provides respite to caregivers. The goal is to enhance the quality of life for Day Break participants through the therapeutic process and quality of art. Participants benefit from the pleasure of creating, increased self-esteem, improved fine motor skills, enhanced socialization and opportunities to reflect. Crealdé curates an exhibition of the participants’ artwork to celebrate their accomplishments with family and friends.

Youth Scholarships

The Alice M. Jenkins Scholarship Fund, founded in 1988 in honor of the wife of Crealdé founder Bill Jenkins, provides free classes from our regular curriculum to an average of 100 economically disadvantaged children and teens each year. In 2016, 20 of our highly successful Summer ArtCamp seats were awarded to scholarship recipients. Scholarships are awarded to students from as close as Winter Park and as far as the farmworker communities of north Orange and south Lake counties. The fund is replenished annually with contributions from private foundations and individual donors.

Crealdé Campus Field Trip Program

More than 2,000 second- and third-grade students from Orange County Public Schools and private schools annually participate in a field trip to Crealdé. During their visit, children observe professional artists at work in their studios, tour the exhibitions in the professional galleries, walk through the lakeside sculpture garden, and then they become the artist in a hands-on workshop, creating a masterpiece to take home.

Free Programming at Area Events

Crealdé conducted hands-on workshops in painting, drawing and clay at more than a dozen community festivals, including the Winter Park Sidewalk Art Festival, the Kids Fringe at the Orlando International Fringe Theatre Festival, three workshops at Winter Park Public Library for a Celebration of Youth Art Month and City of Winter Park’s Earth Day Celebration in Central Park.

Civic Vitality

"I am writing to express my support and enthusiasm for Crealdé generally, and for their very fine work with exhibitions on both the main campus and at the Heritage Center. Under Peter's leadership and artistic excellence, Crealdé has done an exceptional job of teaching and exhibiting documentary photography at its finest. Crealdé is truly a unique community-based art education organization."

— Tom Rankin, Professor
of the Practice of Art and
Documentary Studies, and
Director, MFA in Experimental and
Documentary Arts,
Duke University

Economic Development and Community Partnerships

Crealdé has been committed to creating civic vitality through the arts since its founding. This commitment has brought Crealdé into a position of leadership in the Central Florida Community. Crealdé has a track record of successful long-lasting partnerships, creating over 45 collaborative projects in the past decade. The organization's programs – from children's classes to exhibitions and public art projects – increase social, cultural and even environmental awareness and understanding among people of all ages, races and ethnicities. By celebrating the history and voice of a community through the visual arts, the Heritage Center has gained the attention of many Central Floridians, as well as visitors from around the world. Crealdé built programmatic and marketing partnerships with the Winter Park Chamber of Commerce, Oviedo-Winter Springs Chamber of Commerce, Seminole County Regional Chamber of Commerce, the African American Chamber of Commerce of Central Florida, the Hannibal Square Merchants Association and other local businesses and cultural organizations. Our advocacy for the African-American community of west Winter Park led the city to embrace the idea that this historic community is worthy of preservation. The City of Winter Park has since rebranded itself as the "City of Culture & Heritage."

Expanding Services to West Orange County and Lake County

Winter Garden has demonstrated its leadership by transforming from a languishing agricultural community to a thriving city, with a focus on quality of life through arts and culture, and historic and environmental preservation, balanced with economic development. In August 2010, Crealdé began offering a limited number of painting, drawing and photography classes at Jessie Brock Community Center, a newly renovated recreation center near historic downtown Winter Garden. Located 15 miles west of the Crealdé main campus, it has successfully attracted students from the growing communities of Ocoee, Winter Garden, Windermere, Dr. Phillips and Clermont. Participation is so successful that one out of 10 Crealdé students is enrolled in a Winter Garden class.

Creating Opportunities for Florida Artists and Businesses

Crealdé provides part-time employment for over 50 artists as adjunct, associate and senior faculty members; the addition of a Winter Garden site has increased the need for more instructors. In addition to an administrative staff of seven (three full-time and four part-time), the programming for each of the school's artistic programs is planned and administered by a part-time program and studio manager, who also teaches and uses studio space in the respective facility. A monthly stipend also is paid to a gallery curator for the Alice & William Jenkins Gallery and Showalter Hughes Community Gallery, and to the curator of the Contemporary Sculpture Garden. In addition, Crealdé visiting guest curators and artists (mostly Florida artists), as well as outreach instructors and public art lead artists as independent contractors to instruct special workshops and projects. The estimated impact on the local economy, apart from tuition, is more than \$1 million annually.

Civic Vitality

“Crealdé is a uniquely wonderful place that I wish everyone would be able to experience.”

— Gail Sutherland,
Member since 2014

Taking Care of Our Beautiful Main Campus

Crealdé also contracts with multiple local service providers for materials, exhibition, marketing and facility needs. In 2010, Crealdé completed over \$220,000-worth of campus improvements, including roofing, drainage control, new “greener” air-conditioning units for the Alice & William Jenkins Gallery, the office, and the painting and photography studios, plus sidewalks and some very visible and appealing landscaping. This included the creation of a new front entrance to the central campus area and the Contemporary Sculpture Garden. More recently, Crealdé renovated the entire photography building, including the traditional wet darkroom, adding a new digital printing lab, and a matting and framing work space. In 2015-2016, further upgrading and beautification was performed to the overall campus with the renovation of the two outside bathrooms and the pond, construction of a new maintenance building, and the creation of comfortable gathering places for students and visitors.

Promoting Tourism Through the Heritage Center

Since its opening in 2007, the Crealdé has received high scores from grant panels for the quality of its work through the Hannibal Square Heritage Center, resulting in seven \$40,000 annual grants in addition to the recent award of two \$75,000 annual Cultural Tourism grants from Orange County Arts & Cultural Affairs. The Heritage Center also receives an annual \$40,000 operating support grant from the City of Winter Park’s Community Redevelopment Agency. The reputation of the Heritage Center continues to grow, attracting cultural tourists with a special interest in African-American history. Our programming and marketing efforts to attract tourists have translated into 29 percent of the visitors coming from outside the four-county area. In 2016, out-of-town visitors spent an estimated \$457,200, based on data from surveys designed by Americans for the Arts.



A highlight of the annual Hannibal Square Folk and Urban Art Festival is the Penachos Aztecas Indian Headband Workshop followed by a musical parade led by Mexican folklorist David Peñaflor.

Emerging Artist Programs

“Crealdé provided the educational foundation for me to take my painting from an avocational hobby to the professional focus and passion of my life. The excellent instructors at Crealdé opened my eyes to how little I truly know of painting and set me free on a journey of discovery that I expect to spend the rest of my life exploring – never learning all that there is to know but experiencing the rush of satisfaction at reaching new levels of proficiency and artistry.”

— Helen Avalon, Painter,
Winter Park, Florida

Crealdé School of Art offers students opportunities to develop themselves into professional artists. Through the Crealdé Fellowship Program, the Studio Artist Program and two adult scholarship programs, students can receive mentorship, access to studios and free classes. In 2016, 145 of Crealdé’s tuition-based (non-outreach) courses were free of charge to children, teens and emerging artists through work-study and scholarship programs offered by the school – a tuition value of over \$30,000. All students also have the opportunity to exhibit and sell their work at the two annual art sales and the student exhibition.

The Fellowship Program

Crealdé’s Fellowship work-study program, established in 1978, offers free educational opportunities to students in exchange for hours worked to maintain the studios, assist with children’s classes and festival workshops, help with gallery and community events, and other responsibilities. Applicants are nominated by faculty members. Once approved, Fellowship students stay involved for one to two years. During this period, they can enroll in classes at no cost and have unlimited studio use. They usually complete their Fellowship with an independent study and a developed portfolio. The students volunteer approximately 30 hours per session and applications are accepted year-round.

Studio Artist Program

Established in 1996, the Studio Artist Program is designed for advanced students, former Crealdé Fellows and emerging artists from the community whose goal is to pursue a professional career in the arts. Two positions per year are made available in each of the three Crealdé artistic departments for applicants recommended by a Crealdé staff member. Studio Artists show the results of their work in a biennial exhibition.



Ceramics Studio Artist Rindy Gentile

Adult Scholarship Programs

Established in 1999, the Visiting Scholarship Program enables two area college students to attend our workshops at no charge, and the program is promoted through art professors at area schools. The Cheryl Bogdanowitsch Sculpture Scholarship provides an annual \$1,000 scholarship for classes, workshops and studio use to an adult sculpture student.

Special Volunteers

Crealdé is pleased to have a group of volunteers who fill special niches as needs arise. These volunteers serve whenever their schedule and Crealdé’s needs match. Their areas of work are varied and include classroom assistance, curatorial proofreading, sculpture garden maintenance, and help with festivals, openings and special events.

2016 Attendance Statistics

Total Registrations for Adult and Youth Curriculum

(4 to 8 week classes, workshops and ArtCamp)	
Paid in Full Member and Non-Member	2,849
Complimentary Classes for Fellowship & Scholarship Students	188
Life Drawing Sessions	1,769

Total Registration Attendance for 2016 4,806

Outreach Art Classes and Workshops

Orange County Public Schools Studio Field Trip Program	1,586
Private Schools Studio Field Trip Program	213
“What Heritage Means to Me” Field Trips at Heritage Center	20
Storytellers 17	20
Heritage Center After School Art Classes	648
Heritage Center Senior Classes	450
Easter Seals Day Break Program Fine Art Classes for Seniors	100
Heritage Center Artist in Residence Community Workshops	85
Maxey Comm. Ctr. After School Art Classes, Winter Garden	640
John Bridges Comm. Ctr. After School Art Classes, Apopka (w/ B&G Club)	640
Crealdé’s Sixth Annual Free Family Festival (workshops and demos)	550
Orlando Kids Fringe Festival Youth Art Workshops	140
Winter Park Sidewalk Art Festival Youth Art and Heritage Workshops	953
Winter Park Autumn Art Festival Youth Art and Heritage Workshops	0
Winter Park Earth Day Youth Art Workshops	85
Winter Garden Florida Hospital Expo	150
Misc. Off- and On-campus Presentations to Community and School Groups	250

Total for 2016 Outreach Attendance 6,530

Note: All of the above outreach programs are underwritten by grants, contracts or member contributions and are offered completely free of charge for all participants.

Exhibitions and Special Events

Winter Park Autumn Art Festival (Crealdé is a co-founder/co-sponsor)*	0
Alice & William Jenkins Gallery (4 exhibitions and related events)	7,584
Showalter Hughes Community Gallery (5 exhibitions)	12,019
Hannibal Square Heritage Center	
(permanent collection, 3 visiting exhibitions, special events and tours)	7,882
Traveling Exhibitions (3 permanent exhibitions)	5,200
Contemporary Sculpture Garden	12,000
Hannibal Square Public Art	4,300
Photography Guild	200
Handmade in Florida Gift Shop	2,600
Holiday Art Sale and Cup-A-Thon Events	500
Annual Night of Fire Open Houses	1,200

Total Exhibition Attendance for 2016 53,485

Total 2016 Attendance 64,824

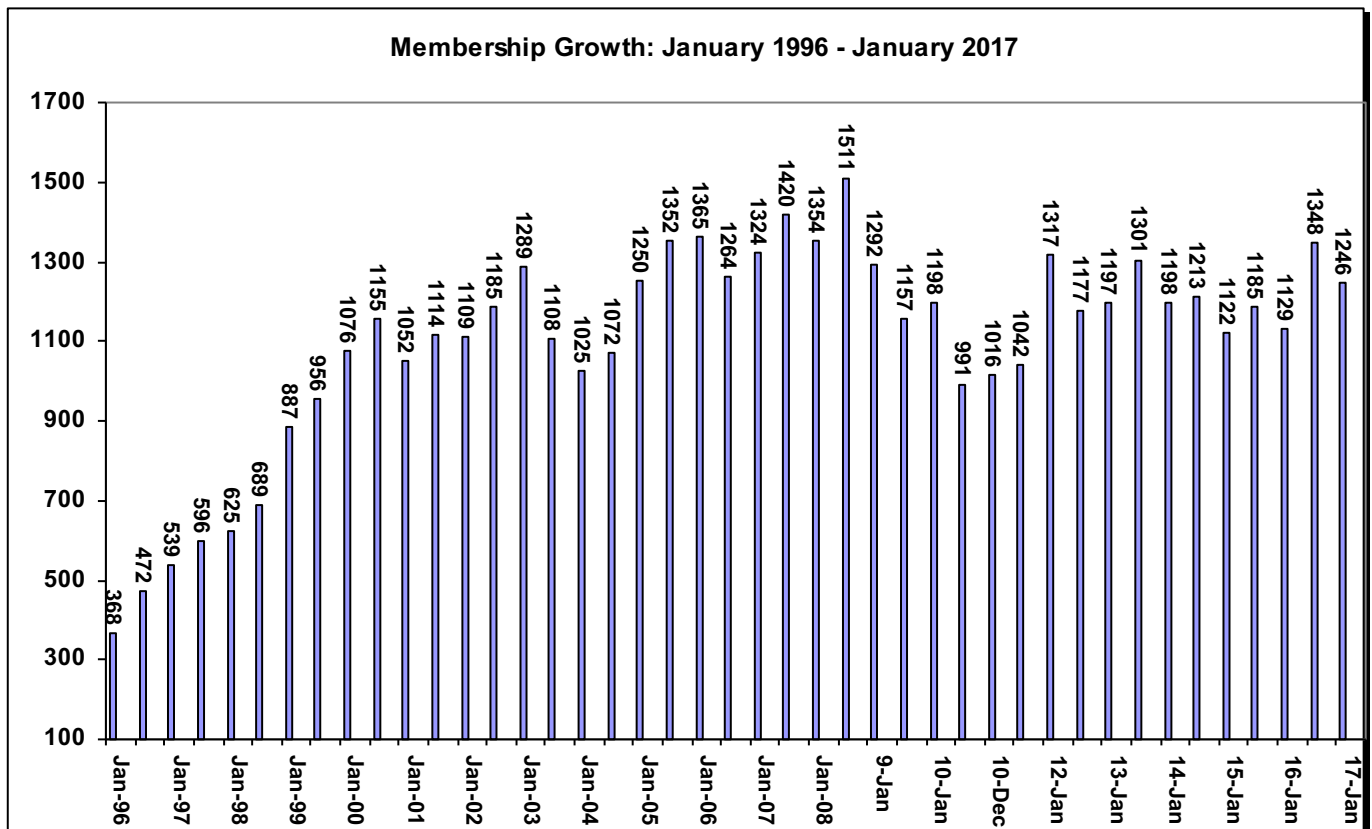
**Note: Due to Hurricane Matthew, the 2016 Winter Park Autumn Art Festival had to be cancelled due to safety concerns for the City of Winter Park. Typically, attendance at this festival exceeds 100,000 visitors.*

■ Membership Report –January 1, 2017

Total memberships show a 10% increase of 119, compared to 12 months ago. In-kind memberships show a marked increase, possibly due to new methods of record-keeping. Almost every category demonstrates an increase. The Friend of Crealdé level memberships show a 17% increase over the previous year's donor level membership.

The information in this report is based on a 120-day grace period, which is strictly enforced.

Basic Individual - \$40	684
Basic Family - \$65	177
Friend of Crealdé - \$100-249	161
Friend of Heritage Center	4
Advocate - \$250-499	28
Patron - \$500-999	29
Benefactor - \$1000 Minimum	18
Corporate Sponsor	5
In-Kind	40
Honorary	44
Lifetime	56
TOTAL MEMBERS	1,246



Submitted by Jan Hurt, *Registrar and Membership Manager, January 1, 2017*

Financial Support

Crealdé School of Art wishes to thank the following private foundations, government agencies and businesses for their continuous support of our general and outreach programming:

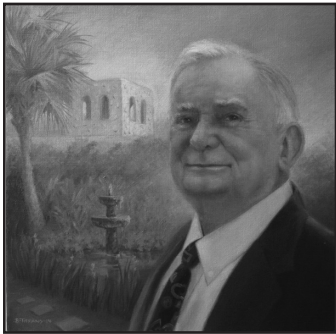
- United Arts of Central Florida
(General Operating Funds)
- Florida Department of State, Division of Cultural Affairs
(General Operating Funds)
- Orange County Government
(Cultural Tourism Funding to support Heritage Center programming)
- The City of Winter Park Community Redevelopment Agency
(Heritage Center programming and operations)
- Anonymous private foundation support
- Akerman LLP
- Amazon Hose & Rubber Co.
- Art Systems of Florida
- The Boyd Foundation
- The Central Florida Foundation
- Citizens for Florida Arts Inc.
- English-Speaking Union, Central Florida Branch
- The Florida Humanities Council
- The James T. Barnes Foundation
- The Orlando Magic
- The Nelson Family Trust
- Rotary Club of Winter Park Charitable Foundation
- The St. Margaret Mary Outreach Fund
- The United Arts Artists in Communities Grant & Mini Grant
- Very Special Arts of Florida
- The Walt Disney World Ears to You Program
- The Winter Park Health Foundation

History of Community Partnerships

Crealdé School of Art has an outstanding record in partnering with arts, cultural, social service and other grassroots organizations in Central Florida. These collaborations have resulted in numerous award-winning art classes, community exhibitions and permanent public art installations. As an example, our teen photography Storytellers program has positively impacted communities from rural Apopka to inner-city Orlando since 1996. A number of these young students' images were exhibited at the State Capitol in Tallahassee. Crealdé partners with numerous governmental, private, nonprofit and social-service organizations in our area. Past and current partners include:

- **Winter Park Community Center, outreach partner (since 1996) and satellite teaching site (1996-2007)**
- **John H. Bridges Community Center, Apopka, satellite teaching site (since 1998)**
- **Maxey Community Center, Winter Garden, satellite teaching site (since 1999)**
- **Jessie Brock Community Center, Winter Garden, satellite teaching site (since 2010)**
- Art & History Museums – Maitland, exhibition partner
- Asian Cultural Association, Longwood, exhibition partner
- Association to Preserve the Eatonville Community (P.E.C.), Eatonville, outreach, ZORA! Festival
- Boys & Girls Clubs of Central Florida, outreach, exhibition partner
- BETA Center, Inc., Orlando, outreach partner
- Callahan Neighborhood Center, Orlando, outreach partner
- The Center for Contemporary Dance, Winter Park, program partner
- Center for Drug Free Living, Orlando, outreach partner
- City of Orlando, outreach and exhibition partner
- City of Winter Park Community Redevelopment Agency, Winter Park, outreach partner and funder
- City of Winter Garden classes and exhibitions
- Cummer Museum of Art & Gardens, Jacksonville, exhibition partner
- Daybreak at The Miller Center, Winter Park, outreach partner
- Department of Cultural Affairs, State of Florida, Creative Capital Retreat for Professional Artists
- Easter Seals of Florida, outreach partner
- ESTEEM Inc. and the Winter Park Housing Authority, outreach partner
- Federal Duck Stamp Program, Department of the Interior, jury participation
- Florida Humanities Council, traveling exhibition program and grant funder
- Full Sail, Visibility campaign for Heritage Center group project
- Gallery at Avalon Island, Orlando, Crealdé Faculty Exhibition
- Golden Rule Foundation, mosaic mural in Hannibal Square and Memory Wall at the Heritage Center
- Hope CommUnity Center, Apopka, outreach partner
- Jeanine Taylor Folk Art Gallery, Sanford, exhibition partner
- Lake County Cultural Affairs Council, Crealdé Faculty Exhibition
- The Mary S. Harrell Black Heritage Museum, New Smyrna Beach, outreach partner
- The Mennello Museum of American Art, Orlando, exhibition partner
- Museum of Fine Arts, St. Petersburg, exhibition partner
- Museum of Florida History, Tallahassee, exhibition partner
- Office for Farmworker Ministry Hope Community Center, Apopka, outreach and exhibition partner
- Orange County Arts Education Center, outreach and field trip partner
- Orange County, Dept. of Health and Family Services, outreach partner
- Orange County Library System, traveling exhibition
- Orange County Public Schools, daily school-year field trip program
- Orange County Regional History Center, exhibition partner
- Osceola Center for the Arts, Kissimmee, traveling exhibition
- Pace Center for Girls, Orlando, outreach partner
- Public libraries in Mount Dora and Miami/Dade, outreach exhibition
- Ritz Theatre and Museum in Jacksonville, exhibition partner
- Rollins College, Winter Park, Office of Community Engagement
- Rural Heritage Center, Geneva, Florida
- Rural Woman's Health Network, Gainesville, exhibition partner
- Seminole State College of Florida, Sanford, exhibition partner
- Southeast Museum of Photography, Daytona Beach, exhibition partner
- St. Johns Cultural Council, St. Augustine, exhibition partner
- St. Margaret Mary, Winter Park, exhibition partner and funder
- Taft Community Center, Orlando, off-campus outreach exhibition
- Tajiri School of Performing Arts and Academics, Sanford, outreach partner
- Unity Heritage Festival, Winter Park, tours of Heritage Collection and free children's art workshops
- University of Central Florida, Orlando, program partner for the Heritage Center
- Very Special Arts of Florida:, St. Petersburg, senior outreach partner
- Winter Garden Family Fair, Winter Garden, free children's art workshops
- Winter Garden Heritage Foundation, Winter Garden, exhibition partner
- Winter Park Autumn Art Festival, Winter Park, free children's workshops and co-founder
- Winter Park History Museum, Winter Park, exhibition partner
- Winter Park Sidewalk Art Festival, Winter Park, free hands-on children's workshops
- Winter Park Unity Festival, Winter Park, free children's art workshops, unveiling of *Heritage Collection*
- Winter Park Welcome Center, Winter Park, Crealdé Partners with Hannibal Square exhibition

Our Founder



"Even as we blossom and grow,
we never lose sight of what Bill
Jenkins intended for Crealdé.
We are dedicated to keeping his
dream alive."

— Peter Schreyer,
CEO/Executive Director, Crealdé
School of Art

Bill Jenkins & His Dream

William Sterling Jenkins traveled the world, built and prospered in many different careers, recorded his travels and experiences in beautiful paintings, and made a permanent impact on the Central Florida community.

- 1909** Born William Sterling Jenkins on December 13 in Preston, Georgia.
- 1934** Graduates with a BFA from the University of Florida, Gainesville.
- 1935** Earns scholarship to study art in Florence, Italy, and travels extensively through Italy and Germany by bicycle and rail.
- 1937** Awarded prestigious Laurea Degree, Royal Academy of Fine Art, Florence, Italy.
- 1938** Opens art school in Columbus, Georgia and paints portraits. Holds solo art exhibitions in Atlanta and Gainesville.
- 1941** Holds solo exhibition in New York City. Travels to Taxco, Mexico to study silversmithing and meet his future wife, Alice Moberg.
- 1942** Marries Alice Moberg on June 6 in Anoka, Minnesota.
- 1942** Drafted into the U.S. Army, Jenkins contracts pneumonia at boot camp in Colorado and is transferred to Orlando, where he recuperates for 17 weeks in the Veterans Administration Hospital.
- 1944** Honorably discharged for work with Human Services, Veterans Administration. On November 11, daughter Ann Welch Jenkins is born in Orlando.
- 1944-46** Works with the Veterans Administration in St. Petersburg, Florida, where he starts a new rehabilitation method incorporating art therapy.
- 1946-48** Opens the Veterans Administration office in Winter Park, Florida, and builds his first home there.
- 1948** On October 3, son William Griffith Jenkins is born in Tallahassee.
- 1950** Earns master's degree in psychology from Florida State University, Tallahassee, and then leaves the Veterans Administration to start Jenkins Construction Co. in Winter Park, Florida.
- 1950-1970** Jenkins starts West Park Homes, building countless houses, condominiums and shopping centers in the Central Florida area.

Our Founder

1953-54	Serves as a City Commissioner for Winter Park, Florida, and starts a movement to build the Olympic-sized pool at Cady Way.
1966	Co-founds the Orange County Council on Aging, which sponsors art classes.
1975	Founds Crealdé Arts Inc., which operates as Crealdé Arts Center, and daughter Ann Jenkins Clement serves as the first director. Crealdé pioneers the concept of a community arts center where local artists share their talent with the general public. The name “Crealdé” came from a combination of the Spanish verb “crear,” which means “to create,” and the suffix “alde,” which is Old English for “village.”
1978	The State of Florida approves the Crealdé articles of incorporation.
1981	The approval of 501(c)(3) nonprofit status enables the school to secure a broad range of funding sources and provide greater community service. A volunteer Board of Directors is established, and Jenkins initially serves as the President.
1982	Three formal departments are established at the renamed Crealdé School of Art – Painting & Drawing, Ceramics & Sculpture and Photography – which builds the groundwork for dramatic expansion in student participation in the coming decade. The still-popular Summer ArtCamp program for children and teens was launched.
1985-89	David A. Edgar serves as the school’s first full-time General Manager. Financial support for the school is secured from the State of Florida, among other funding sources.
1986	Jenkins donates \$600,000 to the University of Central Florida to establish the Jenkins Chair, which he intends as a vehicle to bring the spirit of broad-based visual arts education into the academic environment.
1988	Jenkins receives award from American Art Therapy Association for significant contributions to the field of art therapy. Crealdé establishes the Alice M. Jenkins Scholarship Fund in memory of the founder’s wife, following her death late in the year.
1990	In December, Jenkins gives the school’s property to Crealdé Arts Inc., allowing it to establish complete autonomy, secure new funding sources and participate in partnerships that strengthen Crealdé’s role and relationship with the Central Florida community it serves.
1990-2000	Crealdé expands its mission, growing the emerging artist program, creating teaching sites in underserved communities and deepening its commitment to make the arts available to the widest segment possible of the Central Florida population. Longtime instructor and sculptor David Cumbie formally establishes the Contemporary Sculpture Garden.

Our Founder

1995	The Board of Directors promotes Director of Photography Peter Schreyer to the position of Executive Director. The Crealdé Fine Arts Gallery is renamed in honor of the founders: The Alice & William Jenkins Gallery.
1996	Jenkins dies March 30, survived by his daughter, Ann Clement, and, son, William Jenkins.
2000	Under Board Chair Frank Schornagle III, Crealdé undertakes a successful capital campaign matched by a Cultural Facilities grant from the State of Florida to construct the first new building in two decades and conduct a campus-wide face-lift. The expansion includes a second painting studio and the establishment of the Showalter Hughes Community Gallery with a porch overlooking Lake Sterling. The gallery is named in honor of former Board President Louis Hughes and wife, Arlene Showalter.
2007	In keeping with the school's mission to provide free community outreach programs and foster cultural diversity and preservation of cultural heritage, Crealdé deepens its long-standing relationship with the City of Winter Park by opening the Hannibal Square Heritage Center. The Heritage Center stands as a tribute to the past, present and future contributions of Winter Park's African-American community.
2009	Linda and Percy Maynard of Art Systems of Florida were honored with an Outstanding Business Partner Award for two decades of loyal service as volunteer board members and Crealdé supporters.
2009-10	A \$220,000 campus renovation is completed, funded by an Orange County Cultural Facilities Grant and matched by contributions pledged by an enthusiastic Crealdé membership. A new front entrance is created and extensive repairs are made as well as beautification projects undertaken on the maturing campus.
2010	Crealdé enters a new government partnership with the City of Winter Garden, enabling the school to offer a limited number of classes at the new Jessie Brock Community Center, strategically located near growing West Orange and Lake County communities.
2011	Long-term board member and prominent attorney Cecelia Bonifay is elected Board President.
2015	Record enrollment experienced in the post-recession era coupled with increased private and public funding raises the organizational operating budget to surpass one million dollars. To celebrate the 40th Anniversary, Crealdé exhibitions highlight nationally recognized artists whose work celebrates America's cultural diversity.

Balance Sheet

■ BALANCE SHEET

For the Twelve Month Period Ending December 31, 2016

	Current Year – 2016	Previous Year- 2015
Assets		
Current Assets		
Cash and Cash Equivalents	\$ 22,950	\$ 26,860
Marketable Investments	\$ 31,275	\$ 30,656
Other Current Assets	\$ 9,281	\$ 8,340
Total	\$ 63,506	\$ 65,856
Long Term Assets		
Land, Building, and Equipment	\$1,135,849	\$1,101,369
Total Assets	\$1,199,355	\$1,167,225
Liabilities and Fund Balances		
Current Liabilities		
Accounts Payable	\$ 38,648	\$ 31,195
Fixed Loan	\$108,935	\$127,154
Other Payables	\$ 66,698	\$ 32,083
Total	\$214,281	\$190,432
Fund Balances		
Fund Balance	\$766,314	\$766,314
Year to Date Net Income	\$218,760	\$210,479
Total Equity	\$985,074	\$976,793
Total Liabilities and Fund Balance	\$1,199,355	\$ 1,167,225

Financial Statement

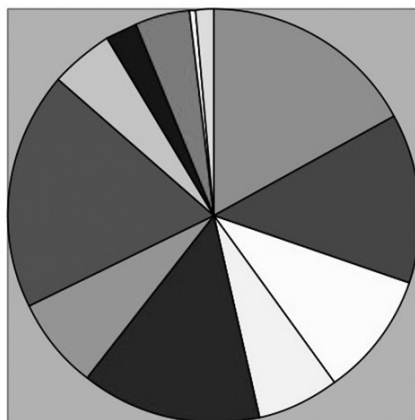
■ FINANCIAL STATEMENT

For the twelve month period ending December 31, 2016

	Unrestricted	Restricted	Total 2016	Total 2015
Revenue				
Membership	\$ 26,253	\$ -	\$ 26,253	\$ 24,855
Tuition and Fees	\$ 559,335	\$ -	\$ 559,335	\$ 543,337
Interest/Dividend Income	\$ 355	\$ -	\$ 355	\$ 295
United Arts	\$ 57,950	\$ -	\$ 57,950	\$ 57,500
Government grants	\$ 53,738	\$ 130,341	\$ 184,079	\$ 207,278
Foundation grants	\$ -	\$ 13,900	\$ 13,900	\$ 11,000
General donations	\$ 54,570	\$ 15,514	\$ 70,084	\$ 73,378
Corporate Donations	\$ 3,064	\$ -	\$ 3,064	\$ 5,038
Special Projects and Events	\$ 27,317	\$ 24,669	\$ 51,986	\$ 22,993
In-Kind Income	\$ 129,371	\$ -	\$ 129,371	\$ 99,021
Miscellaneous	\$ 3,117	\$ -	\$ 3,117	\$ 2,625
Total	\$ 915,070	\$ 184,424	\$ 1,099,494	\$ 1,047,320
Program Expenses				
Facility and Gallery	\$ 216,713	\$ -	\$ 216,713	\$ 164,948
Programmatic Expenses	\$ 465,813	\$ -	\$ 465,813	\$ 466,243
In-Kind Expense	\$ 97,221		\$ 97,221	\$ 99,021
Total Programs	\$ 779,747	\$ -	\$ 779,747	\$ 730,212
Administrative Expenses	\$ 309,266	\$ -	\$ 309,266	\$ 303,856
Total Expense	\$ 1,089,013	\$ -	\$ 1,089,013	\$ 1,034,068
Net Income			\$ 10,481	\$ 13,252

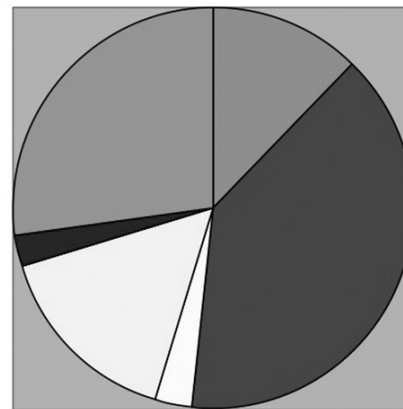
Earned vs. Contributed Income

Earned Income: \$623,212



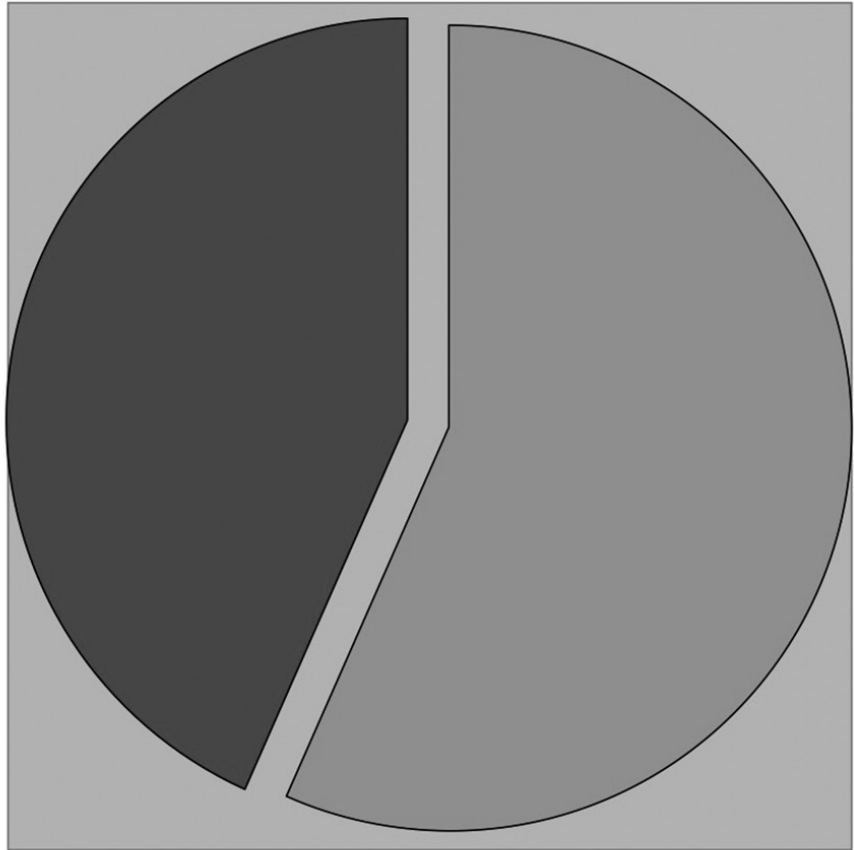
- Painting & Drawing Tuition: 18% (\$109,526)
- Ceramics, Sculpture, Fiber Arts, Jewelry/Glass Tuition: 14% (\$84,901)
- Photography Tuition: 10% (\$62,902)
- Winter Garden Tuition: 6% (\$40,050)
- ArtCamp Tuition: 15% (\$92,139)
- Youth & Teen Tuition: 7% (\$46,572)
- Fees: 19% (\$119,600)
- Contracts: 5% (\$30,985)
- Gallery & Sales: 3% (\$16,394)
- Memberships & Dues: 4% (\$26,253)
- Other: 1% (\$3,411)
- Discounts: -2% (\$9,521)

Contributed Income: \$476,282



- United Arts - 12% (\$57,950)
- Government - 40% (\$188,543)
- Foundations - 3% (\$13,900)
- Donations - 16% (\$74,142)
- Fundraising Events - 3% (\$12,376)
- In-Kind - 26% (\$129,371)

Crealdé School of Art *Completed Fiscal Year 2016*



■ **Earned Income: 57%**
(\$623,212)

■ **Contributed Income: 43%**
(\$476,282)

Members and Contributors

*Membership listings
as of May 1, 2017*

INDIVIDUAL

Tad Adamitz
Jan Addison
Lee Adler
Ana Aguel
Lorna Ahrens
Suzanne Aistrop
Robert Albertson
Nancy Albright
Jean Alexander
Tetyana Alford
Amy Alvarez
Elaine Anderson
Laura Anderson
Filipe Araujo
Laurea Armstrong
Mary Avery
Toby Ayers
Howard Axner
Barbara Bailey
Jeannie Baker
John Baker
Monely Balouchian
Wanda Banaei
Ana Barboza
Patricia Barboza
Steve Barnhart
Rosa Bartell
Casey Barton
David Bass
Kim Baumgart
Linda Baumgartner
Susan Beall
Dan Beard
Tom Beasley
Judith Beede
Trina Behrens
Betty Belair
Javier Benitez
Laura Bennett-Kimble
Armando Bevelacqua
Patricia Biagiotti
Christina Bingham
Pierson Boss
Sharon Bozarth
Ruth Bradford
Taylor Breter
Kevin Brown
Sue Brown
John Brownlee
Abigail Bruehl
Lorraine Bruno
Divina Bungard
Rachel Bunye

John Bush
Hannah Butler
Dennis Byle
Samara Caballero
Kathleen Cabrera
Andrew Calandrino
Jimmy Calderon
KC Cali
Kathleen Callaghan
Kamari Calvelli
Elizabeth Cantrill
Karla Cardwell
Ann Carreon
Monique Carreras
Chloe Carrizzo
Daniel Carroll
Paris Carter
Al Castellana
Patricia Cavazos
David Chavez
Tracy Chen
Jane Choo
Mila Chun
Mabell Clausen
Colleen Cleary
Abella Cohen
Paul Conway
Evan Cookinham
Juli Cookson
Mary Jo Corbett
Ruth Corddry
Natalia Costa
Isabella Cota
Andrea Cox
Carolyn Crawford
Raine Creative
Stacey Cree
Nicholas Criscitelli
Connie Croom
Jill Cross
McKenna Crossland
Deeja Cruz
Don Culver
Rosalind Curtis
Allison Daniels
Angelina Darazhanska
Sandra Daugherty
Beth Davalos
Sarah Davis
Jocelyn Davis
Micaela De Oliveira
Dana DeClerk
Prayong Deeying
Marsha DeFacci

Laure Dejeant
Sara Delgado Carmona
Emily Donder
Edward Donie
Stan Duffendack
Debby Eckwahl
Cecilia Egea
Nicole Elliott
Marlene Ellyn
Mark Ernest
August Esposito
Barbara Estevez
Sanney Etchison
Susan Fallows
Janice Fallows
Brandon Farrell
Jaime Ferguson
Lesley Ferguson
Jacqueline Ferris
Roseanne Field
Arturo Figueroa
Rolanda Findlay
Barbara Fischler
Elaine Fitzgerald
Naymond Fontenot
Pamela Foster
Nicole Fournier
Barbara Fowle
Laurel Fowler
Alyssa Foxson
Alan Fricker
Margaret (Peggy) Fritsch
Laura Fulton
Heidi Galassini
Isidra Garcia Sio
Robert Gardner
Keith Gardner
Nicole Garlington
Laura Garza-Huizar
Joshua Gibbs
Randy Gittess
Belinda Glennon
Daryl Golden
Ariana Gonzalez
Sharon Good
Jillian Goodman
Madeline Gordon
Melissa Granberry-Pranke
Kathie Green
Carson Grove
Carole Halliday
Daphne Hammond
Holly Hanson
Savannah Hardy

Members and Contributors

Diane Harnish
John D Harris
Christopher Hauser
Alice Hayden
Marcellus Hederson
Mary Hense
Eileen Hernandez
Bailey Hester
Bret Hill
Gail Hill-Smith
Patricia Hinely
Son Ho
Michelle Hoang
Alicia Hodge
Michael Hodges
Ariyana Holder
Andrew Holland
Pamela Honeywell
bailey hooper
Diana Houle
Jerry Howard
Bonnie Hubbard
Alexandria Hudson
John Hursh
Carlos Hurst
Vickie Hutson
Karen Iaccarino
Nardine Ibrahim
Esther Idrovo
Linda Jaeger
Merry Joy Jaeger
Harry Janis
Patricia Jenkins
Dean Jennings
John Jeronimo
Teri Jett
Maria Teresa Jimenez
Aurybel Jimenz
Paulette Johnson
Sandra Johnson
Allan Jones
Christopher Jones
Silvia Joo
Gerald Jowers
Susan Judson
Ashley Julian
Frantz Kalil
Kati Kane
Patty Kane
Patricia Kann
June Katynski
Robin Katz
Michele Kennedy
Paula Keogh

Barbara Kern
Donna King
Margaret Kinst
Susan Kirby
Sylvia Kirkendoll
Susan Kivler
Julia Knox
Blanca Kogl
Brandon Koller
Jake Kottkamp
Stephanie Kovach
Alison Kravchuk
Lark Kruse
Spencer Kurtz
Linda LaCombe
Lucy Ladner
Nelly Lama
Bill Lambert
Patricia Lancaster
Ayanna LaPierre
Nancy Lawhorn
Kris Le Falchier
Kathryn Leathers
Michael Levine
Louise Levy
Ken Lichtenberger
Wyatt Littrell
Chenyi Liu
Marlene London
Willy Lopez
Amy Luek
Mickey Luongo
Debra Lupton
Ava Luther
Gabriel Macean
Traci Maclaime
Wendy Maillard
Linda Maingot
Tony Malatino
Sharon Maldonado
Charlotte Mansur
Holly Manus
Karen Marcarelli
Phil Margot
Julixiana Marmolejos
April Martin
Caprice Martin
Maurizio Maso
Jacob Mason
Shelley Mathews
Sarah Matthaai
Judi Mattison
Jayla Mauvais
John McConnell

Israel McGowan
Kya McGruder
Robert McIntosh
Lawrence McIntyre
Susan McKenna
Kevin McLearn
Barbara Mcmann
Tamara McNeil
Lucy McPherson
Janice Medland
Ana Melendez-Mujica
Donna Mesker
Emily Mezydlo
Nora Miller
Leah Miller
Fumino Miller
Maria Barbara Miller
Khyati Modii
Antonio Moll
Sandra Montes
Melanie Monzadeh
Elisabeth Moore
Joanna Moore
Jennifer Moore
Carlos Morales
Ginelle Morales
Natalia Morris
Mara Mrruku
Sonia Mueller
Arnold Munroe
Anjali Nangunoori
Victoria Nanos
Maria Navas
Matt Nicholson
Isabel Nieves
Chloe Nixon
Tess Nixon
Eva Nyizsnyanszki
Jane Oatway
Reese Odza
Haeri Oh
Beth Ojalvo
Juanita Olarte
Priscilla Oliver
Jesus Ordaz
Donna Oros
Julia Orr
Maxwell Osborne
Mark Osterberg
LaDonna Ovitz
Ally Owen
Ciera Palmer
Ela Palmer
Elinor Parker

Members and Contributors

Sylvia Parker
Angela Passmore
Kathy Patages
Raji Pathy
Linda Peaden
Ronald Pedonti
Rosemarie Pell
Annalisse Pena
Beth Pendleton
Jennifer Pereira
Kaitlynn Perez
Annika Perez
Mary Beth Perkins
Elizabeth Perry
Leah Pertot
Jared Phillips
Jerry Pierce
Sophia Pitt
Judy Plett
Juliana Pollastri
Courtney Ponds
Theresa Quinn
Anna Quinton
Rowan Quitariano
veronica rabelo
Jan Ramsey
Sri Rao
Sue Ravoory
Alexandra Ray
Kelly Richards
Cherie Rieck
David Rios
Lisa Roberts
Cynthia Roberts-Sucharski
Quen Robson
Alexia Rodriguez
Jose Rodriguez
Patricia Rogero
Tina Romanic
Greg Root
Andy Rosemurgy
Diane Rossi
Jody Rousseau
Audrey Rudolph
Emmanuel Ruiz
Shelby Rumsey
Caitlin Russo
Lily Sacasa
Gary Sackcheck
Arianna Sagias
Giannina Sanchez-Masi
Daniel Santiago
Adolfo Santiago
Susan Santoro

Sam Saporito Jr
Linda Saunders
Brandy Schafer
Olivia Schiebold
Dr. Howard Schwartz
Benjamin Seif
Maria Seijas
Debra Sellers
Lindy Shepherd
Andrea Simbler
Paul Skomsky
Liam Smit
Elisabeth Smith
Anna Smith
Kristen Smith
Katherleen (Katty) Smith
Debbie Snow
Ellen Solomon
Elizabeth St. Hilaire
Karla Staker
Diane Stapleton
Haven Stearns
Linda Steede
Rissah Steele
Grace Stehle
Rachel Stewart
Helen Stone
Kerri Stratford
Jorge Suazo
Enid Swift
Maria Tarantino
Clara Tatum
Evelyn Tavaréz
Katelyn Taylor
Mason Teply
Darian Terrell
Jamieson Thomas
Alexa Thomas
Phynix Thomas
Leanne Thomas
Emily Thompson
Lisa Toney
Olivia Torre
Deborah Umphrey
Janet Vargas
Cristina Vasquez
Shaye Ventura
Betty Walden
Michael Walsh
Jonia Warkentin
Nell Warman
Jane Webster
Joan Wechsler
Carol White

Cindy Wilkerson
Karen Williams
Sarah Willoughby
Sharon Wirag
Jane Wood
Mary Workman
Susanne Wright
Linda Wu
Karyl Young
Cherie Zabel
Hongjie Zhu
Xiaotan Zhu
Matt Ziegler

FAMILY

Kimberly Alch
Jordan Alch
Peyton Alch
Campbell Alch
Mudar AlJoumayly
Firas AlJoumayly
Jenna AlJoumayly
Chris Allen
Ana-Klara Anderson
Sofia Anderson
Sofia Anderson
Lynne Bachrach
Kariti Barre
Steve Belflower
Elizabeth Belflower
Jennifer Belflower
Joseph Belflower
Juan Beltran
Rooske ten Berge
Dana Berisha
Arzana Berisha
Barbara Boyd
Jeannette Brinton
James Brinton
Joey Brinton
Assatte Brown
Susan Brown
Zachery Brown
Micah Brown
Victoria Brown
Davi Budnik
Ashli Budnik
Annabella Buggs
Shannon Burgos
Delilah Burgos
Luis Burgos
Linda Camp
Matthew Camp
Alecia Camp

Members and Contributors

Emily Candelario
Daniela Cardona
Giancarlo Castellano
Tessla Castellano
Karla Castro-Frenzel
Adrienne Centinaro
Milagros Cerrud-Jordan
Randall Chapman
Logan Chapman
Rachel Chapman
Sandra Chen
Chelsea Chen
Sumin Choi
Kevin Choi
James Chung
Sarah Chung
Beatriz Collado
Riley Collado
Ed Collado
Sofia Collado
Hilary Cooperman
Phyllis Corkum
Jeff Corkum
Marielle Corkum
Marielle Corkum
Michelle Crouse
Tiffany Crouse
Yohanna Culbert
Laura Cuty-Ruiz
Vanessa Dai
Kaylee Dai
Austen DeGrenier
Kameron Demarco
Brooks DeMarco
Emerson DeMarco
Joan Denihan
Micaela De Oliveira
Christina Bingham-Simko
Beth Dover
Andrew Dover
Christine Doyle
Sherry Dubin
Sara Dubin
Jordon Dubin
Ginger Duggan
Lucie Duggan
Augustine Dunn
Erika Eddy
Donna Elliott
Madi Elliott
Katherine Ellis
Johan Erazo
Juan Esparza
Sofia Esparza

Montserrat Esparza
Breana Belle Falero
Caroline Farr
Ninette Forte
Cesar Galeano
Olivia Galeano
Mia Galeano
Renee Garrett
Elijah Garrett
Zachary Garrett
Homa Gerami
Kristen Gillan
Liam Gillan
Robin Giove
Robert Giove
Nancy Godwin
Angelita Gordon
Kayla Gordon
Celine Gordon
Ivelisse Gotay
Jubilee Gotay
Julianna Gotay
Edwin Gotay
Michelle Gray
Megan Gray
Natalie Gray
Zsh'Kara Graybill
Katie Hamby
Rex Hammack
Nazema Haniff
Jeffrey Hao
Lucas Hao
Lucia Hao
Sofia Hao
Ronda Harrell
Dylan Harrell
Lincoln Harrell
Diana Hernandez
Margaret Hettler
Leroy Hettler
Cynthia Hicks
Ben Hicks
Matthew Hicks
Megan Hicks
Tammy Hooker
Dashiehl Imundo
Richard Imundo
Gabriela Jacovino
Zoe Jacovino
Animish Jagadish
Lisa Jennings
Kimbrough Jennings
Brittany Johnson
Jorge Jordan

Jorge Jordan
Gary Kaleita
Cynthia Kaleita
Judy Keegan
Kiley Keegan
Catherine Keegan
Kerry Keegan
Shannon Kelly
Katherine Kelly
Chris Kelly
William Kelly
Martha Kessler
Omar Khan
Maryam Khan
Brian Kimsey-Hickman
Missy Kimsey-Hickman
Nicole Kleinsteuber
Sawyer Kleinsteuber
Elizabeth Kleinsteuber
Annette Kodera
Karen Koestner
Eliana Koestner
Sabrina Koestner
Margo Kragh
Julia Kragh
Amanda Kucker
Aimee Layson
Kaitlyn Layson
James Lee
Jill Lee
Rachael Leemis
jeni leemis
nathan leemis
Ralph Leemis
Sandra Leong
Yan Lin
Mildred MacKenzie
Emilie Marsich
Matilde Martinez
Angie McCoy
Natalie McCoy
Emilia McCoy
Scott McMillen
Mariel Mellado Forte
Debbie Miller
Brian Miller
Kulsum Mohammed
Ismail Mohammed
Mark Mongeau
Ana Moreno
Kelly Murphy
Rebecca Ness
Joseph Ness
Bob Nichol

Members and Contributors

Becky Nichol
Jill Norburn
Charlie Norburn
Katie Norburn
William Norburn
William Oatway
Enrique Ortiz
Samuel Ortiz
Carson Osowski
John Osowski
Maria Otero
Diana Paladino
Lynsei Paladino
Fanny Perez
Pamela Peters
Shauna Pierce
Carolyn Polomski
Martin Polomski
Thuy Quach
Madeline Quach
Vianna Quach
Davonne Raizor
Kim Reblock
Kimberly Reblock
Rolly Ray Reel
Christina Resende
Wendy Reynolds-Imundo
Leah Richardson
Christina Richardson
Lauren Richardson
Glenda Ritzie
Doricia Rivas
Alain Rivas
Marielba Rivera - Erazo
Jessica Robb
Dylan Robb
Kylie Robb
Mariana Rodriguez
Sabina Rodriguez
Tina Romanic
Marianna Ross
Josephine Ruiz
Sarah Saint Gregory
Abigail Saint Gregory
Emma Saint Gregory
Nilsa Santos
Marc Sardy
Jamie Sardy
Dick Scheibe
Mary Scheibe
Shanna Schlossberg
Noah Schlossberg
Max Schlossberg
Oliver Schlossberg

Kimberly Schnacky
Yahiliz Seiltgen
Sage Seiltgen
Charlotte Smerge
Shirley Smith
Tony Smith
Natalie Smith
Juliana Smith
Denise Smith
Elliot Smith
Katherine Snead
Erin Snead
Mille Sorger
Mark Sorger
Tom Stewart
Lillian Sutter
Jon Sutter
Tami Sylvester
Scott Sylvester
Mario Szewczuk
Hugo Szewczuk
Valentina Szewczuk
Adam Mohamad Taha
Rima Taha
Eva TENGHOFF
Renee Thompson
Grey Thornberry
Helen Thornberry
Mason Thornberry
Joan Thyer
Andrea Torres
Emma Torres
Gabe Torres
Laura Trinta
Tricia Twitty
Michele Van Son
Josh Van Son
Mark Vantil
Oliver Vantil
Morgen Vantil
Anita Vassos
Nathan Vassos
Nina Vassos
Hannah Vazzana
Ada Vazzana
Nicolette Vilmos
Landon Vilmos
Grant Vilmos
Evan Vilmos
Julian-Alexandre Wang
Brennen-Pierson Wang
Mackenzie-Ryann Wang
Lora Wardman
Sidney Wardman

Robert Wester
Jennifer Whitley
Jamie Wilson
Teresa Wood
Amanda Woods
Eliza Woods
Olivia Woods
Mohammed Yakoob
Irene Young
William Young
Kerry Zelenty
Meredith Zornek
Will Zornek

FRIEND OF CREALDÉ SCHOOL OF ART

Stacey Adams
Lucie Adams
Glenn Adams
Bill Ashby
Ken Austin
Mary Avery
Lynne Bachrach
Daniel Bachrach
Jeannie Baker
Jeri Baldwin
Harold Barley
Geoff Bedine
Celia Black
Grant Blackburn
Juanita Blumberg
Lisbeth Bock
Ellen Borowicz
Alana Brenner
Matthew Brenner
Lynn Brenner-Katz
Marilyn and Rich Breeze
Doug Bringle
Ben Brotemarkle
Diane Bundschu
Sherri Bunye
David Bunye
William Carpenter
Suzanne Carpenter
Anna Cash
Kenneth Cashon
Lawanza Charlton
Dana Christopher-Muench
Kenneth Courtney
Sally Curry
Edwin "Dan" Dantin, Jr
Paula Davis
Andrew Davis
Christopher Denion

Members and Contributors

Maggie DeVane
Sandra Dienst
Lisa Drury
Vaughn Dunham
Lee Dunkel
Emma Dunn
Emma Dunn
Jerry Eans
Eric Elbert
Patricia Ezzard
George Fender
Andrew Ferguson
Dione Fetner
Laurie Finelli
Robert Flick
Robert Flick
Ann Flick
Nicole Flick
Jacob Fontanez
Sammie Fontanez
Carolyn Franklin
Emma Fulmore
Homa Gerami
Sharon Good
Robert Green
Charlie Grindrod
Andrea Harston
David Harvey
Cathy Hempel
Donald Hempel
Barbara Hillerman Lieske
Lori Hudson
Elizabeth Hunter
Adrienne Iannone
John Ingoglia
Susan Jackman
Marilyn Jeffcoat
Jon Jeffcoat
Alex Jeffcoat
Jackie Johnson
Robin Johnson
Ian Johnson
Jessica Johnson
Etta Juge
Michael Kakos
Marc Katzen
Henrietta Katzen
Mary Kelsh
Grady Kimsey
LiSA Kittrell
Jerilyn Kreps
Robert Kreps
Nancy Krug
Elizabeth Kummernes

Ellen LaGrone
Richard Levine
Bruce Lieske
Fairolyn Livingston
Ruth Loescher
Sandra Lowe
Kris Lyden
Vadim Malkin
Meredith Malkin
Pete Matchett
Alex Matchett
Michael McClure
Mike McCorkle
Colton McCorkle
Daniel McCurdy
Ricki McCurdy
Ellie McDonald
Robby McDonald
Karen Mcdonald
Mary (Mimi) McDowell
Christina McKelvey
Trace McKelvey
Barbara Metz
Bob Michaels, Jr.
Jan Moss
Cindy Murray
Frank Murray
Sandra Narvaez
Marc Odell
Sharon Omens
Nina Oppenheim
Ronald Oppenheim
Marie Orban
John Page
Rhonda Pearlman
Marsee Perkins
Sarah Peterson
Alex Pettit
Catherine Philips
Flora Pinder
Gregory Presnell
Jack Prietsch
Kathie Prince
Randy Pritchard
Michelle Ransom
Isabel Ransom
Calvin Ransom
Mike Rausch
Eric Ravndal III
Irma Richardson
Terri Rickerson
David Rickerson
John Rigsby
Virginia Rigsby

Tiffany Robinson
Shelby Roderick
Charles Ross
Marianna Ross
John Ruffier
Kathy Salmieri
Mariolina Salvatori
Joan Sanchez
Heidi Savage
Kelly Sawyer
Peter Schreyer
Angelina Schreyer
Betsy Schreyer
Bill Segal
Sara Segal
Layla Shackelford
Gwen Shirley
Ella Slenick
Les Slesnick
Kat Smedes
Brisa Smith
Pamela Snyder
Heather Sooder
Karl Sooder
Kathy Stecker
Charles Stecker
Lorna Stokes
J. Martin Sullivan
Gail Sutherland
Beverly Tavel
Lee Tavel
Jamieson and Robert
Thomas
Renee Thompson
Lilly Thompson
Barbara Tiffany
Laura Twiford
Deborah Umphrey
Jayne Wayson
Rosemary White
Jennifer Whitley
Carolyn Whitley
Jack Whitley
Trudy Wild
Carolyn Williams
Sandy Womble
Richard Womble
William (Bill) Worrall
Ann Worrall
Jennifer Young
Stacey Young-Adams

Members and Contributors

FRIEND OF THE HERITAGE CENTER

Erica Linguanti
Fairolyn Livingston
Carolyn Ozimek
Richard Hall

ADVOCATE

Kim Ashby
James Boyer
Carolyn Chace
Delos Clift
Beth Clift
Jeanette Colon
Natalie Colon
Kevin Cosgrove
Ann Croft
Jeffrey Dove
Rebecca Dubill
Andrew Dubill
Jennifer Dymond
William Dymond
Valada Flewellyn
Rick Ferreira
Cristina Ferreira
Belinda Glennon
Clyde Hall
Maud Hall
Jacqueline Johnson
Jack King
Kathleen King
Rado Mestrovic
Mari Moye
Mary Palmer
Antoinette Peck
Richard Protheroe
Danielle Reeber
Maria Rubin
Larry Ruggiero
John and Margaret Sanders
Nancy Sedacca
Adolphus St. Clair
Joshua Van Son
Bill Walker
Robbi Walker
Lynn Warnicke
Woody Whitchurch
Christopher Wilmot

PATRON

Judy Albertson
Helen Avalon
Richard Boggs
Cecelia Bonifay

Ali Bovis
Jason Bovis
Louise Buhrmann
Bob Buhrmann
Frances (Alicia) Clarke
Pat Cochran
Kristin Congdon
Donald DeGraw
Marlyn Felsing
Valada Flewellyn
Pamela Holland
Louis Hughes
Daniel Iosue
Dean Jennings
Miriam Levy
Michele Lis
Percy Maynard
Jeffrey Moore
Mindy Moore
Suzanne Nelson
Ian Pope
Don Preble
Shirley Range
Summer Rodman
Arlyne Showalter
Louise Sprimont
Joe Terranova
Mark Thompson
Eric Varth
Joseph Warren
Susan Warren

BENEFACTOR

Stefan Alexandres
Sally Alexandres
James Barnes
Diana Barnes
Bernard Blekfeld
Elise Bloom
Brooke Booth
Elizabeth Cohen
Carolyn Garnsey
Laurie Hagemmaier
Leslie Hardy
Joseph Hurt
Jan Hurt
Lynne McCoy
Galen Miller
Kim Novak
Jane Poche
Orit Reuben
Gary Rupp
Katherine (Kay) Rupp
Frank Schornagle, III

Cathy Slung
Larry Slung
David Smith

CORPORATE DONORS

Akerman LLP
Effective Financial
Services, Inc.
Orlando Magic
Pinder Rehabilitation
Services, LLC

BUSINESS PARTNERS

Miller's Hardware
Florida Frame House
Kiwi Camera Service
Lure Design, Inc
Sam Flax Orlando
ArtSystems of Florida

IN-KIND DONORS

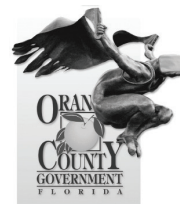
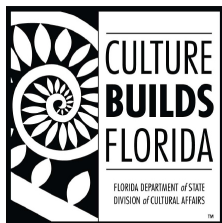
Stefan Alexandres
Bernard Blekfeld
Richard Boggs
Diane Boswell
Ben Brotmarkle
Pat Cochran
Donald DeGraw
Jeffrey Dove
Marlin Felsing
James Jones
Michele Lis
Jeff Matz
Percy Maynard
Rado M. Mestrovic
Alex Petit
Jane Poche
Don Preble
Mike Rausch
Orit Reuben
Keith and Nancy Ruddick
Larry Ruggiero
Gary Sackcheck
David A. Smith
Adolphus St. Clair
Eric Varth
Woody Whitchurch

LIFETIME

Richard Auger
Susan Bach
Bachmann, Bill
Cheryl Bogdanowitsch
James Bojarzuk

Members and Contributors

Bolton, Christopher
Wallace Bookins
Butch Charlan
Ann Clement
Mindy Z. Colton
Cowley, Heather
David Cumbie
Marsha Debroske
Glenn Dobkin
David A Edgar
Johann Eyfells
Julie Foley
Frank Gady
Michael Galletta
James Gibson
Gary Graham
Chuck Harmeling
Cecil Herring
Helen Hickey
Jacqueline Jones
Penny Jordan
Timothy N Keating
Lesa Kramer
Bob Lerner
Dennis Long
Steve and Gretchen Lotz
Mickey Luck
Jon Manchester
Rebekah McCloud
Kevin Miller
Susan Neumeyer
Arnold Newman
Bill Platt
Alzo J. Reddick
Terri Rosenthal
Vince Sansone
Andy Schuerger
Gerry Shepp
Sinn, Henry
Karen Smith
Katherleen (Katty) Smith
Barbara Sorensen
Philip Tiedke
Richard Valentino
Robin Van Arsdol
Susan Vey
Michael Walsh
Dean Warren
John Wolfe



Crealdé School of Art is a nonprofit art organization supported in part by memberships, United Arts of Central Florida; the City of Winter Park; Orange County Government through the Arts & Cultural Affairs program; the State of Florida Department of State, Division of Cultural Affairs; the Florida Arts Council; the National Endowment for the Arts; and various private foundations.